

VENDED

Speed Queen Horizon® Front Load Washers



Speed Queen®



FRONT LOAD WASHER SPECIFICATIONS

	Quantum Gold		MDC (Micro-Display Control)	
Cylinder Volume - cu. ft. (liters)	2.84 (80)		2.84 (80)	
Width - in (mm)	26 7/8 (683)		26 7/8 (683)	
Depth - in (mm)	28 (711)		28 (711)	
Height* - in (mm)	43 (1092)		43 (1092)	
Weight - lb (kg)	250 (113)		250 (113)	
Shipping Weight - lb (kg)	270 (123)		270 (123)	
Cycle Time - minutes	27		27	
Motor	1 HP, 750 W		1 HP, 750 W	
Water Consumption - gal. per cycle	12.8 ¹	10.9 ²	14.8	12.8 ¹
Water Factor (WF)	4.5 ¹	3.8 ²	5.2	4.5 ¹
Modified Energy Factor (MEF)	2.24 ¹	2.46 ²	2.16	2.24 ¹
Hot Water - gal. per cycle	1.59 ¹	0.9 ²	1.59	
Water Pressure - psi (bar)	20 - 120 (1.4-8.3)		20 - 120 (1.4-8.3)	
Spin Speed - RPM	500, 650, 1000		500, 650, 1000	
Cycle/Temperature	Hot Warm Cold	Normal Perm Press Delicate	Normal Hot Perm Press Warm	Normal Warm Delicates Cold
Electrical Specifications	120/60/1-15 amp		120/60/1-15 amp	
Agency Approval	cULus		cULus	
Activation	Coin/Card-Ready		Coin/Card-Ready	
Top	Stainless Steel, Porcelain		Porcelain	
Colors	Stainless Steel, White, Bisque		White, Bisque	
Door Type	Window		Window	
Network Compatible	Yes		No	

* Heights may vary slightly depending on leveling adjustments.

¹ EcoWaterSaver Model

² 2011 CEE Tier 3 Model

At Speed Queen, we're so confident that our heavy-duty commercial washers and dryers are Commercial Built to Last Longer, that we're offering the following limited warranty to prove it: Through three years[†] — Any part of the washer, dryer or stack dryer. Through five years[†] — The washer transmission assembly, base and cabinet assembly including top, lid and door, against rust from inside out.

Lifetime* — The stainless steel washtub.

† Parts only. Labor not included. See Speed Queen Warranty Bond for specifics.

For the most accurate information, the installation guide should be used for all design and construction purposes. Due to continuous product improvements, design and specifications subject to change without notice. The quality management system of Alliance Laundry Systems' Ripon facility has been registered to ISO 9001:2000.

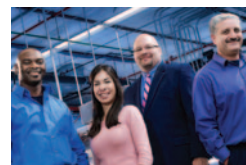
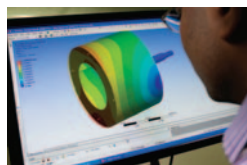
Printed in the U.S.A.

speedqueen.com

BUILT FOR **RELIABLE** PERFORMANCE.

100 years. It's a long time for any company to be at the forefront of an industry. And you'd think that a company that's been able to lead for that long must have a finely honed craft — a premier product. Well, you'd be right. For more than a century, Speed Queen has built a legacy on providing equipment that stands up to any commercial laundry challenge. We make no compromises in performance. We refuse to be outdone in reliability and efficiency. Our commitment to quality is only matched by our commitment to your success. The result? The most profitable machines in the industry — bar none.

Some of our competitors may think that a residential machine wrapped in a rugged exterior passes for commercial grade. We believe that strength comes from within. Speed Queen machines are built specifically for the commercial environment. We use metal where others use plastic. Our world-class Test Lab rigorously pushes our products far beyond the conditions they'll face in the field. We believe in being there when our customers need us most. And we go the extra mile at every point of our manufacturing process to ensure that our machines reflect that belief.



LAUNDRY. IT'S ALL WE DO.

As the world's largest commercial laundry company, we help you achieve profitability with more laundry services than anyone else in the industry.

LAUNDRY DESIGN

From selecting the right location to choosing a layout — and everything in between.

GLOBAL NETWORK OF DISTRIBUTORS

Our global network is stocked with true laundry experts, partnering with you to offer comprehensive guidance, service and support.

CUSTOMER ONE

We're committed to delighting our customers at every point of interaction.

GENUINE PARTS

Same design. Same reliability. The perfect maintenance solution.

FINANCING

Experience. Knowledge. Guidance. Speed Queen Financial Services has the tools to define a viable financial strategy, whether you're a first time investor or sophisticated entrepreneur. See for yourself how our progressive programs, successful track record and unbeatable laundry expertise can help you succeed. Visit SpeedQueen.com/finance to learn more.

DEDICATED TO A HIGHER STANDARD.

STAINLESS (certain models) STEEL CABINET

Perfectly matches washer-extractors with front controls and a sleek cohesive look.

LARGE CAPACITY

A large 2.84 cu. ft. washtub with an 18 lb capacity.

DOOR OPENING

15.5" diameter and a 180° door swing help customers quickly load and unload the machine.

ENERGY STAR® EFFICIENCY

Water consumption of 14.8 gallons per cycle or lower.

300 G-FORCE FINAL SPIN

Reduces drying times by removing more water than competing models.

FAST

27 minute cycle times make Horizon® faster than many competing single-load washers.



FRONT CONTROL

Extremely user-friendly and ADA compliant.

AUTOMATIC SUPPLY DISPENSER

Add laundry chemicals at the beginning of the cycle and they will be dispensed automatically during the cycle.

DRAIN OPTIONS

With gravity and pump drain options, Horizon can be installed adjacent to existing top load washers or large washer-extractors.

HEAVY-DUTY DESIGN

A rugged suspension system minimizes vibration, while a steel piano-style hinge maintains proper door alignment.

FREE-STANDING DESIGN

Equipped with four heavy-duty shock absorbers to accommodate any floor type.

LONG-LASTING

Trunnion and bearing housing are constructed from solid cast aluminum.

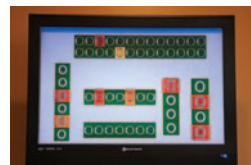
QUANTUM™ GOLD CONTROLS.

Picture a world in which you actually run your business, rather than your business running you. Imagine the freedom of controlling your laundry facility from home, on the road or wherever you want to be. Such a world does exist. And it's powered by Quantum™ Gold.

This revolutionary technology unites equipment controls, programming and store management into one versatile system, giving you total control over your business from any remote location. With Quantum Gold, you can adjust your cost structure, reduce your utility costs and maximize your revenue — from any computer, anywhere in the world.

INCREASE REVENUE

Up-to-the-minute data on your store's activity gives you complete control, thus maximizing revenue potential. **Cycle Modifiers** allow you to offer premium cycle prices. And **Time of Day Pricing** can optimize profits during peak hours or increase traffic on slow days with variable pricing options. Plus, you can use **Multi-Level Vend** to offer different prices for each wash temperature.



DECREASE COSTS

Quantum Gold doesn't just help make you money — it helps save you money. **Auto Shutdown Assistant** helps prevent closing delays that require overtime wages, while **Low Power Mode** reduces your electricity usage while your store is closed.

DELIVER THE ULTIMATE CUSTOMER SERVICE

Quantum Gold doesn't stop at making your life easier. An intuitive design and user-friendly controls allow customers to seamlessly select the ideal wash settings for their needs with **Cycle Modifiers**. The **Lucky Cycle** adds fun and an incentive to return. And **Auto Shutdown Assistant** prevents potential customer conflicts at the end of the day.

MOVE FORWARD WITH CONFIDENCE

Quantum Gold Networking gives you the freedom to program and manage your stores from any computer, while keeping you updated on any potential service issues with **Email Notification**. The **Drop Off Mode** lets you set aside machines for attendant washing duties without manually disabling the vend function. These features, like all of Quantum Gold's revolutionary offerings, give you the freedom to run your facility on your terms — anytime and from anywhere.

Speed Queen®



© 2011 Alliance Laundry Systems LLC AC11-0122

