

VENDED

## Speed Queen Washer-Extractors

20 lb Washer-Extractor

30 lb Washer-Extractor

40 lb Washer-Extractor

60 lb Washer-Extractor

80 lb Washer-Extractor

125 lb Washer-Extractor

**Speed Queen®**



# VENDED QUANTUM™ WASHER-EXTRACTOR SPECIFICATIONS

		SC20	SC30	SC40	SC60	SC80	SC125
<b>Control Option</b>		Gold, Silver, Standard	Gold, Silver, Standard	Gold, Silver, Standard	Gold, Silver, Standard	Gold, Silver, Standard	Gold (Prep for Card)
<b>Capacity - lb (kg)</b>		20 (9)	30 (13.6)	40 (18)	60 (27)	80 (36)	125 (56)
<b>Overall Width - in (mm)</b>		26 (660)	29 (737)	30 5/8 (778)	34 1/16 (865)	41 1/2 (1054)	48 (1219)
<b>*Overall Depth - in (mm)</b>		30 1/4 (767)	34 9/16 (878)	39 3/4 (1009)	42 9/16 (1081)	51 1/2 (1308)	56 3/4 (1441)
<b>Overall Height - in (mm)</b>		42 (1067)	45 (1142)	47 1/4 (1199)	49 7/8 (1267)	56 3/16 (1426)	70 1/2 (1791)
<b>Cylinder Diameter - in (mm)</b>		21 (533)	24 (610)	26 1/4 (667)	30 (762)	36 (916)	42 (1067)
<b>Cylinder Depth - in (mm)</b>		13 3/4 (349)	16 (406)	20 1/4 (514)	22 (559)	22 (559)	24 (810)
<b>Cylinder Volume - cu ft (liters)</b>		2.76 (78.1)	4.19 (118)	6.34 (180)	9.0 (255)	12.4 (354)	19.2 (544)
<b>Door Opening Size - in (mm)</b>		11 5/8 (295)	14 5/16 (364)	16 1/4 (413)	16 1/4 (413)	18 1/2 (470)	20 (508)
<b>Door Bottom to Floor - in (mm)</b>		14 3/8 (365)	14 (356)	14 1/2 (368)	14 15/16 (379)	17 15/16 (455)	29 (737)
<b>Water Inlet Connection - in (mm)</b>		2 @ 3/4 (19)	2 @ 3/4 (19)	2 @ 3/4 (19)	2 @ 3/4 (19)	2 @ 3/4 (19)	2 @ 3/4 (19)
<b>Drain Diameter - in (mm)</b>		1 @ 2 (52)	1 @ 2 (52)	1 @ 3 (76)	1 @ 3 (76)	1 @ 3 (76)	1 @ 3 1/2 (89)
<b>Drain Height to Floor - in (mm)</b>		4 1/2 (114)	4 1/2 (114)	4 13/16 (122)	4 11/16 (119)	5 3/4 (145)	13 (330)
<b>G-Force</b>		2 Speed F/V Speed 82G 100/140G	2 Speed F/V Speed 82G 100/140G	2 Speed F/V Speed 82G 100/140G	2 Speed F/V Speed 82G 100/140G	F/V Speed 100/140G	V Speed 140G
<b>Motor Power Consumption - HP (kW)</b>	Wash High Extract	.15 (.11) N/A .74 (.55) 1 (.75)	.24 (.18) N/A 1.34 (1.0) 1 (.75)	.40 (.30) N/A 1.8 (1.3) 2 (1.7)	.55 (.41) N/A 2.7 (2.01) 3 (2.2)	N/A 5 (3.7)	N/A 7.5 (5.6)
<b>Total # of Speeds</b>		2 5, 7	2 5, 7	2 5, 7	2 5, 7	5, 7 7	
<b>Cylinder Speeds - RPM (G-Force)</b>	Gentle Wash Distribution Low Medium ** High **Very High	N/A 29 (.25) 55 (.9) 52 (.8) N/A 92 (2.5) 519 (80) 518 (80) N/A 580 (100) N/A 635 (120) N/A 686 (140)	N/A 27 (.25) 49 (.8) 48 (.8) N/A 86 (2.5) 468 (75) 485 (80) N/A 542 (100) N/A 594 (120) N/A 641 (140)	N/A 26 (.25) 51 (1) 46 (.8) N/A 82 (2.5) 486 (88) 464 (80) N/A 518 (100) N/A 568 (120) N/A 613 (140)	N/A 24 (.25) 47 (.9) 43 (.8) N/A 77 (2.5) 450 (86) 434 (80) N/A 485 (100) N/A 531 (120) N/A 574 (140)	22 (.25) 40 (.8) 70 (2.5) 396 (80) 443 (100) 485 (120) 524 (140)	26 (.4) 37 (.8) 65 (2.5) 366 (80) 410 (100) 448 (120) 485 (140)
<b>***</b>	B	120/60/1	20-16 N/A	N/A N/A	N/A N/A	N/A N/A	N/A
<b>Voltage</b>	F	440-480/60/3/3	15-4 N/A	15-4 N/A	15-5 N/A	15-5 N/A	N/A
<b>/Hz</b>	C	380-415/50/4/3	15-4 N/A	15-4 N/A	15-5 N/A	15-5 N/A	N/A
<b># of wires/</b>	J	200/50/3/3	15-5 N/A	15-7 N/A	20-7 N/A	20-10 N/A	N/A
<b>Phase/</b>	O	208/220-240/60/3/3	15-3 N/A	15-7 N/A	20-7 N/A	20-10 N/A	N/A
<b>Circuit</b>	Q	200-208/220-240/50/60/3/3	N/A 15-5	N/A 15-5	N/A 15-6	N/A 15-8	15-11
<b>Breaker</b>	N	440-480/50/60/3/3	N/A 15-4	N/A 15-4	N/A 15-5	N/A 15-6	15-8
<b>- FLA</b>	P	380-415/50/60/3/3	N/A 15-4	N/A 15-4	N/A 15-5	N/A 15-6	15-8
	X	200-208/220-240/50/60/3/1/3	N/A 15-6 (1 Ph) 15-4 (3 Ph)	N/A 15-7 (1 Ph) 15-5 (3 Ph)	N/A 15-10 (1 Ph) 15-6 (3 Ph)	N/A 15-11 (1 Ph) 15-8 (3 Ph)	20-16 (1 Ph) 15-11 (3 Ph)
<b>Shipping Dimensions Approx. - in (mm)</b>	Width Depth Height	29 1/2 (749) 34 5/8 (879) 51 1/2 (1308)	32 1/2 (828) 39 13/16 (1014) 54 1/2 (1389)	34 1/4 (867) 44 5/8 (1133) 56 3/4 (1441)	38 (965) 49 (1245) 59 3/8 (1508)	48 (1219) 56 (1422) 65 3/4 (1670)	50 1/2 (1283) 60 (1524) 75 1/2 (1918)
<b>Net Weight - lb (kg)</b>		387 (176)	489 (222)	692 (314)	812 (368)	1374 (623)	2301 (1044)
<b>Shipping Weight - lb (kg)</b>		420 (191)	530 (240)	734 (333)	854 (387)	1461 (663)	2384 (1081)
<b>Export Shipping Weight - lb (kg)</b>		475 (215)	593 (269)	816 (370)	948 (430)	1573 (714) 2	492 (1131)
<b>****Agency Approvals</b>		cETL <sub>US</sub> , CE	cETL <sub>US</sub> , CE	cETL <sub>US</sub> , CE	cETL <sub>US</sub> , CE	cETL <sub>US</sub> , CE	cETL <sub>US</sub>

\*Overall depth includes vacuum breaker to door handle.

\*\*High & Very High Spin Speeds are available on the V Speed models only.

\*\*\*Circuit breaker and amp draw data shown are for models without electric heat. Consult factory for other configurations. Manufacturer strongly recommends using a circuit breaker instead of fuses. Use 3-pole circuit breakers for 3-phase machines.

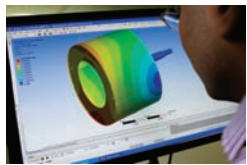
\*\*\*\* Agency approvals may vary depending on configuration. Consult factory for details. Steam connection requires 1/2" N.P.P.

For the most accurate information, the installation guide should be used for all design and construction purposes. Due to continuous product improvements, design and specifications subject to change without notice. The quality management system of Alliance Laundry Systems' Ripon facility has been registered to ISO 9001:2000.

# BUILT FOR **RELIABLE** PERFORMANCE.

100 years. It's a long time for any company to be at the forefront of an industry. And you'd think that a company that's been able to lead for that long must have a finely honed craft – a premier product. Well, you'd be right. For more than a century, Speed Queen has built a legacy on providing equipment that stands up to any commercial laundry challenge. We make no compromises in performance. We refuse to be outdone in reliability and efficiency. Our commitment to quality is only matched by our commitment to your success. The result? The most profitable machines in the industry — bar none.

Some of our competitors may think that a residential machine wrapped in a rugged exterior passes for commercial grade. We believe that strength comes from within. Speed Queen machines are built specifically for the commercial environment. We use metal where others use plastic. Our world-class Test Lab rigorously pushes our products far beyond the conditions they'll face in the field. We believe in being there when our customers need us most. And we go the extra mile at every point of our manufacturing process to ensure that our machines reflect that belief.



## LAUNDRY. IT'S ALL WE DO.

As the world's largest commercial laundry company, we help you achieve profitability with more laundry services than anyone else in the industry.

### LAUNDRY DESIGN

From selecting the right location to choosing a layout, and everything in between.

### GLOBAL NETWORK OF DISTRIBUTORS

Our global network is stocked with true laundry experts, partnering with you to offer comprehensive guidance, service and support.

### CUSTOMER ONE

We're committed to delighting our customers at every point of interaction.

### GENUINE PARTS

Same design. Same reliability. The perfect maintenance solution.

### FINANCING

Experience. Knowledge. Guidance. Speed Queen Financial Services has the tools to define a viable financial strategy, whether you're a first time investor or sophisticated entrepreneur. See for yourself how our progressive programs, successful track record and unbeatable laundry expertise can help you succeed. Visit [SpeedQueen.com/finance](http://SpeedQueen.com/finance) to learn more.

# DEDICATED TO A HIGHER STANDARD.

## 4 COMPARTMENT DISPENSER

Customers can add two detergents, bleach and softener, all at the beginning of the cycle.

## AUTOMATIC DOOR LOCK

Pause and resume feature within first three minutes of cycle start.

## SUPERIOR FIT AND FINISH

The door frame is designed for both form and function.

## STAINLESS STEEL CYLINDER AND SHELL

Ensuring durability and long life.

## SECURE HIGH-CAPACITY COIN VAULT

More secure and higher capacity vaults than the competition.



## COIN VENDED OR PREP FOR CARD

Both options are available direct from the factory.

## ADVANCED AUDIT TECHNOLOGY

Receive alerts of a slow or leaking drain, ensuring consistent performance and potentially saving hundreds of gallons of water.

## BEARINGS, SHAFT AND SEAL ASSEMBLY

Maximum protection against damaging effects of moisture.

## DOOR HANDLE

Ergonomically designed for ease of operation, reducing the risk of alignment problems and door-lock error codes.

## FRONT SERVICE ACCESS

Allows for minimum down time and ease of service.

# QUANTUM™ GOLD CONTROLS.

Picture a world in which you actually run your business, rather than your business running you. Imagine the freedom of controlling your laundry facility from home, on the road or wherever you want to be. Such a world does exist. And it's powered by Quantum™ Gold.

This revolutionary technology unites equipment controls, programming and store management into one versatile system, giving you total control over your business from any remote location. With Quantum Gold, you can adjust your cost structure, reduce your utility costs and maximize your revenue — from any computer, anywhere in the world.

## INCREASE REVENUE

Up-to-the-minute data on your store's activity gives you complete control, thus maximizing revenue potential. **Cycle Modifiers** allow you to offer customers premium cycle selections. And **Time of Day Pricing** can optimize profits during peak hours or increase traffic on slow days with variable pricing options. Plus, you can use **Multi-Level Vend** to offer different prices for each wash temperature.



## DECREASE COSTS

Quantum Gold doesn't just help make you money — it helps save you money. **Auto Shutdown Assistant** helps prevent closing delays that require overtime wages, while **Low Power Mode** reduces your electricity usage while your store is closed. Choose from **30 programmable water levels** to optimize each wash cycle segment. Quantum Gold also notifies you of leaks and blockages instantly with **Auto Water Leak** and **Slow Drain Detection** features.

## DELIVER THE ULTIMATE CUSTOMER SERVICE

Quantum Gold doesn't stop at making your life easier. An intuitive design and user-friendly controls allow customers to seamlessly select the ideal wash settings for their needs with **Cycle Modifiers**. The **Lucky Cycle** adds fun and an incentive to return. And **Auto Shutdown Assistant** prevents potential customer conflicts at the end of the day.

## MOVE FORWARD WITH CONFIDENCE

**Quantum Gold Networking** gives you the freedom to program and manage your stores from any computer, while keeping you updated on any potential service issues with **Email Notification**. The **Drop Off Mode** lets you set aside machines for attendant washing duties without manually disabling the vend function. These features, like all of Quantum Gold's revolutionary offerings, give you the freedom to run your facility on your terms — anytime and from anywhere.

**Speed Queen®**



© 2011 Alliance Laundry Systems LLC AC11-0118

